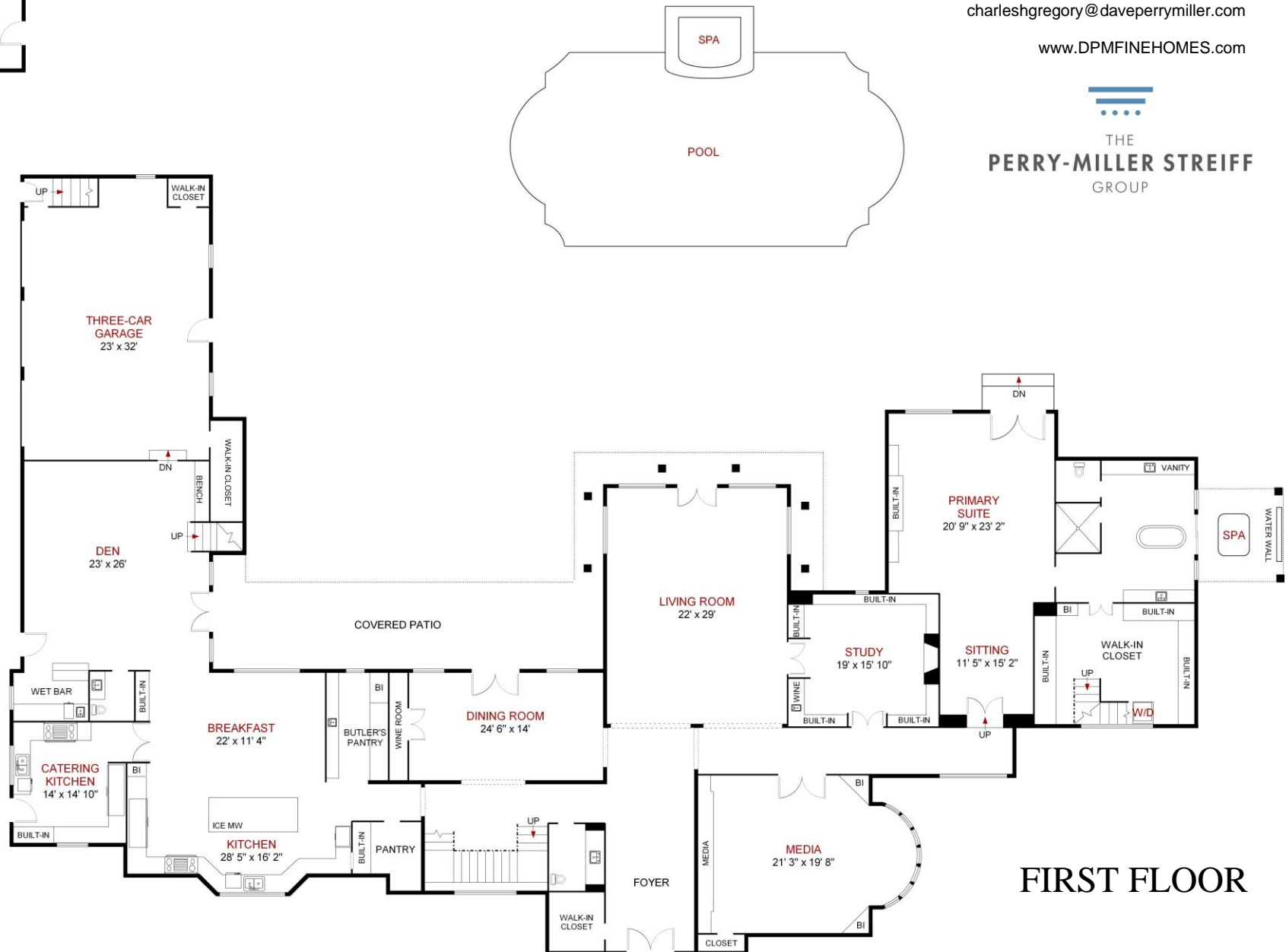
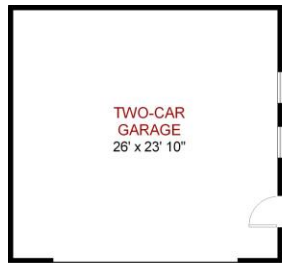


4700 Dorset Road  
Dallas, TX 75229

**Ryan Streiff**  
469.371.3008  
Ryan@DavePerryMiller.com

**Charles Gregory**  
214.929.4434  
charleshgregory@daveperrymler.com

www.DPMFINEHOMES.com



**FIRST FLOOR**

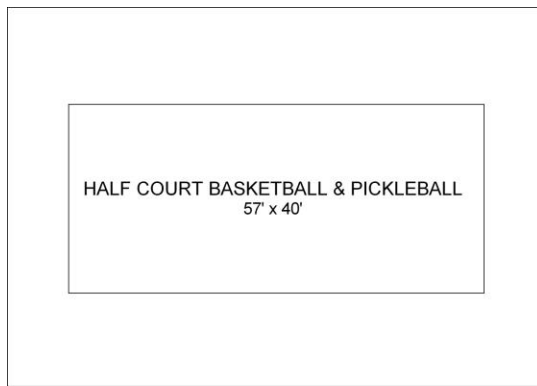
## SECOND FLOOR

The floor plan for the second floor includes the following rooms and features:

- GUEST SUITE SITTING:** 17' 4" x 14' 7"
- GUEST SUITE BEDROOM:** 14' x 15' 3"
- BEDROOM:** 12' 6" x 17' 3"
- BEDROOM:** 12' 6" x 17'
- LOFT:** 14' x 13' 5"
- GAMEROOM:** 11' 8" x 22'
- UTILITY:** 14' x 6' 8"
- LOUNGE:** 23' 2" x 16' 8"
- FITNESS:** 15' 2" x 14'
- MASSAGE ROOM:** 15' 4" x 14' 8"
- GYM / STUDIO:** 20' 8" x 23' 2"
- DRESSING:** 16' 6" x 17' 6"
- LANDING:** 19' 10" x 15' 10"
- SALON:** 13' 5" x 20' 7"

Other features include multiple closets (CLOSET, WALK-IN CLOSET), a desk, media area, mechanical room, wet bar, sauna, built-in storage (BI), and two balconies. Stairs are marked with 'UP' and 'DN' arrows.

## GUEST HOUSE / SPORTS COURT



DRAWING BY:



The floor plan is a general depiction of the layout of the rooms. It is only approximate and is not an exact measurement of the size of the house or the rooms shown in the plan.

972-771-1440